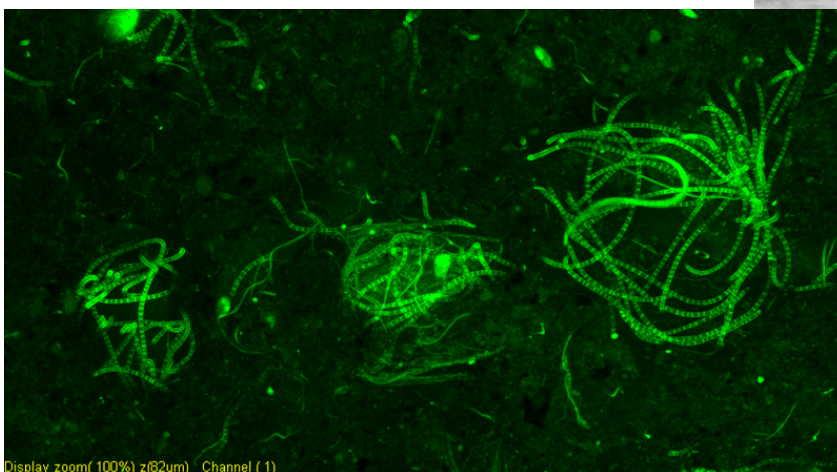
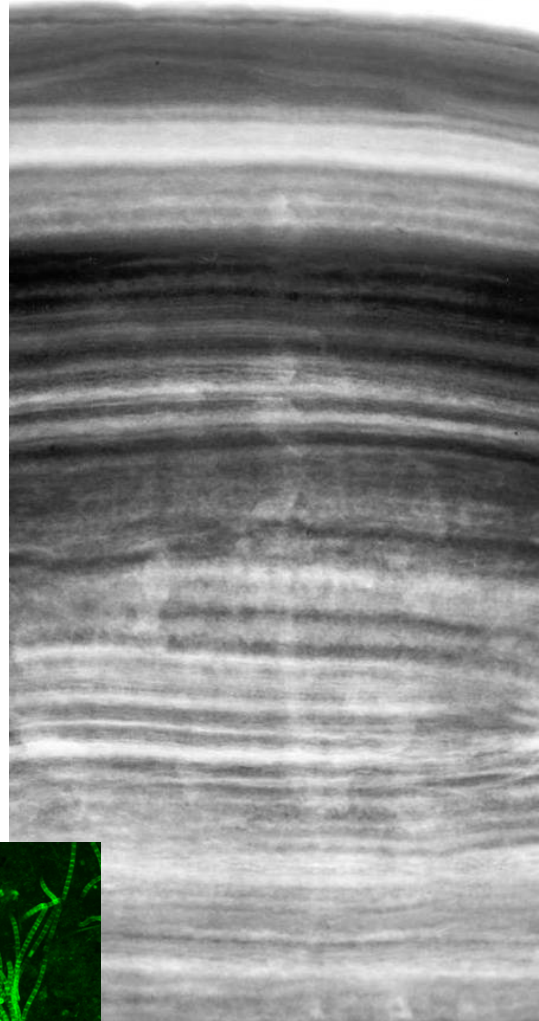


# Life in laminated sediments:

**Metazoans and protists  
living in steep redox  
boundaries and their  
possible effects on  
pore-water processes &  
the geologic record**



Display zoom( 100%) z(82um) Channel (1)

**Joan Bernhard,  
WHOI**

**Monday June 21<sup>st</sup>, 2010 at 16.00 s.t.**